



SHACKLETON'S WAY


LEADERSHIP LESSONS FROM THE GREAT ANTARCTIC EXPLORER

www.LeadershipLives.com




PART 1 / INTRODUCTION

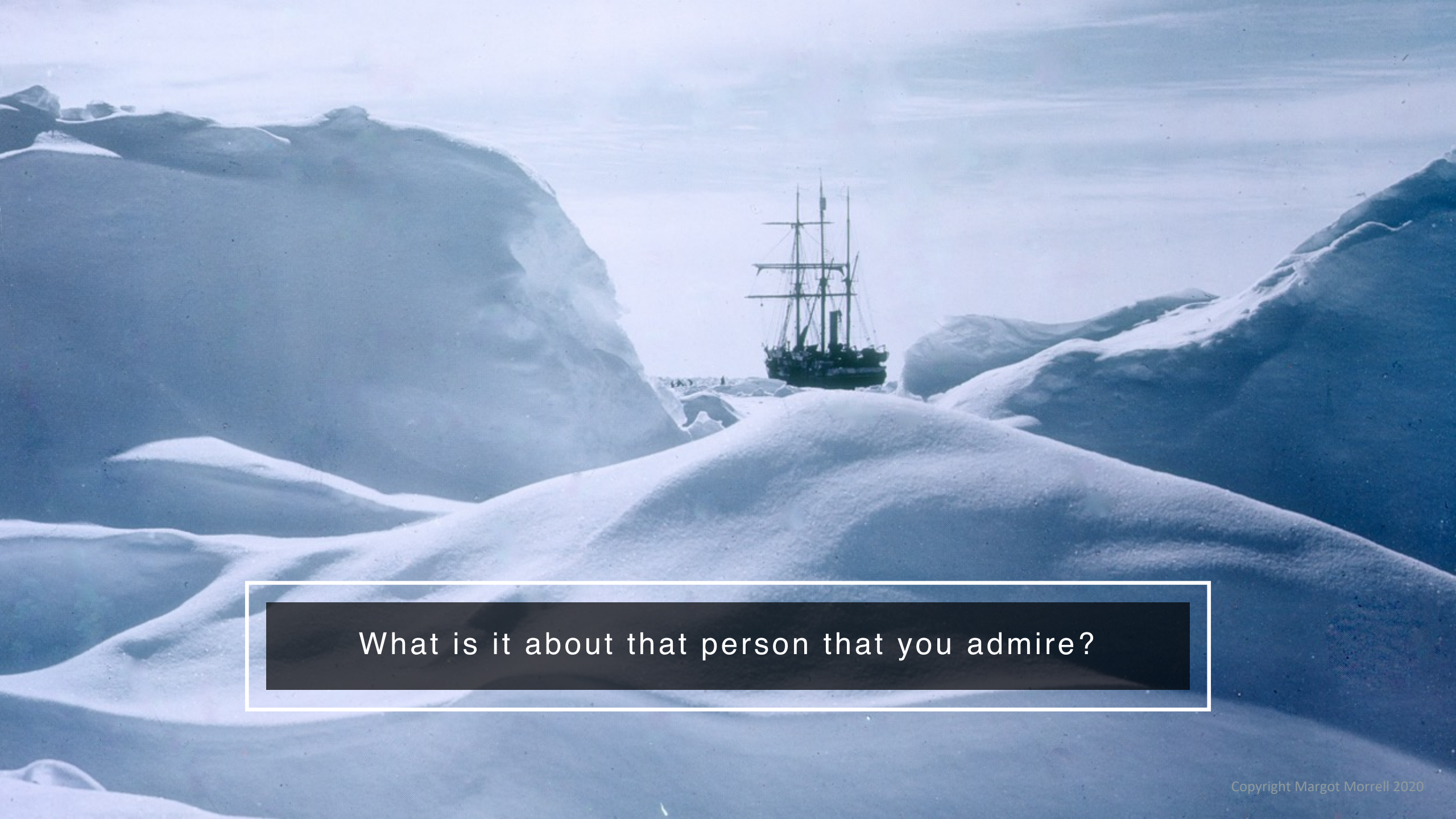
Before we focus on Shackleton and leadership,
please consider one question.



Who do you know – personally - that you consider
a great leader?

A large, blue-tinted photograph of an ice cave. The cave's interior is visible, showing a dark opening where a small boat with several people is positioned. The ice walls are textured and layered, creating a sense of depth and scale. The overall color palette is dominated by various shades of blue and white, giving it a cold, ethereal appearance.

A parent, grandparent,
a teacher, a friend, boss or coach?



What is it about that person that you admire?




As you think about this great leader,
you will find yourself zeroing in on the
four practices of great leaders.



THE 4 PRACTICES OF GREAT LEADERS

- LEADING BY EXAMPLE
- COMMUNICATING EFFECTIVELY
- KEEPING UP MORALE
- MAINTAINING A POSITIVE ATTITUDE



In the next section, we'll look at how Shackleton developed strong leadership skills.